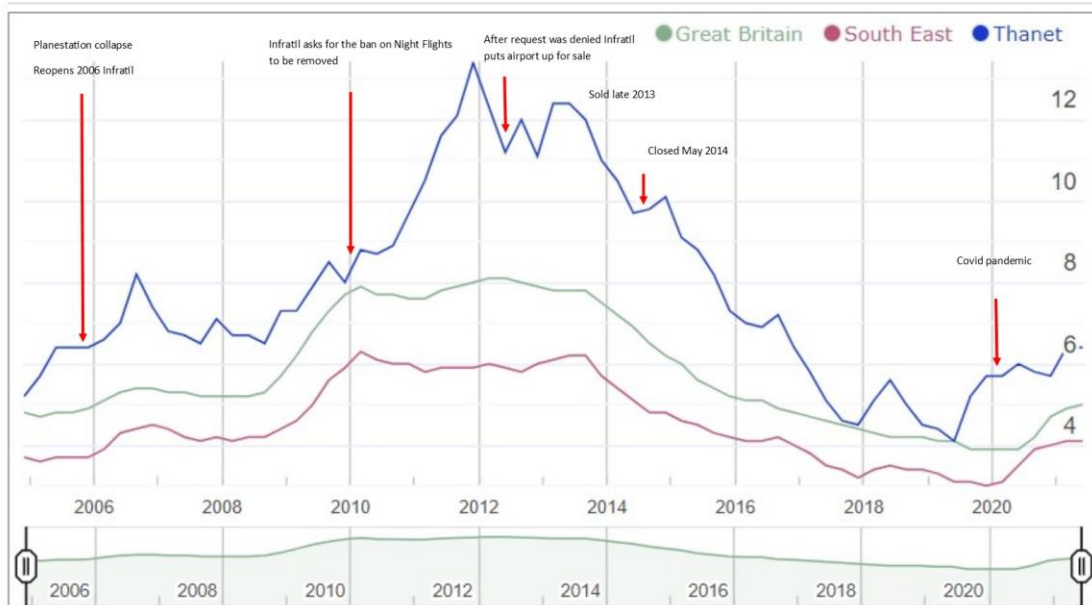


Unemployment in Kent

Using this website [redacted] it is possible to see unemployment statistics for Thanet compared to The UK and the South East. I have annotated the graph to show Manston Airport's history and clearly whether the airport is open or closed outside factors have more of an effect than the airport itself.



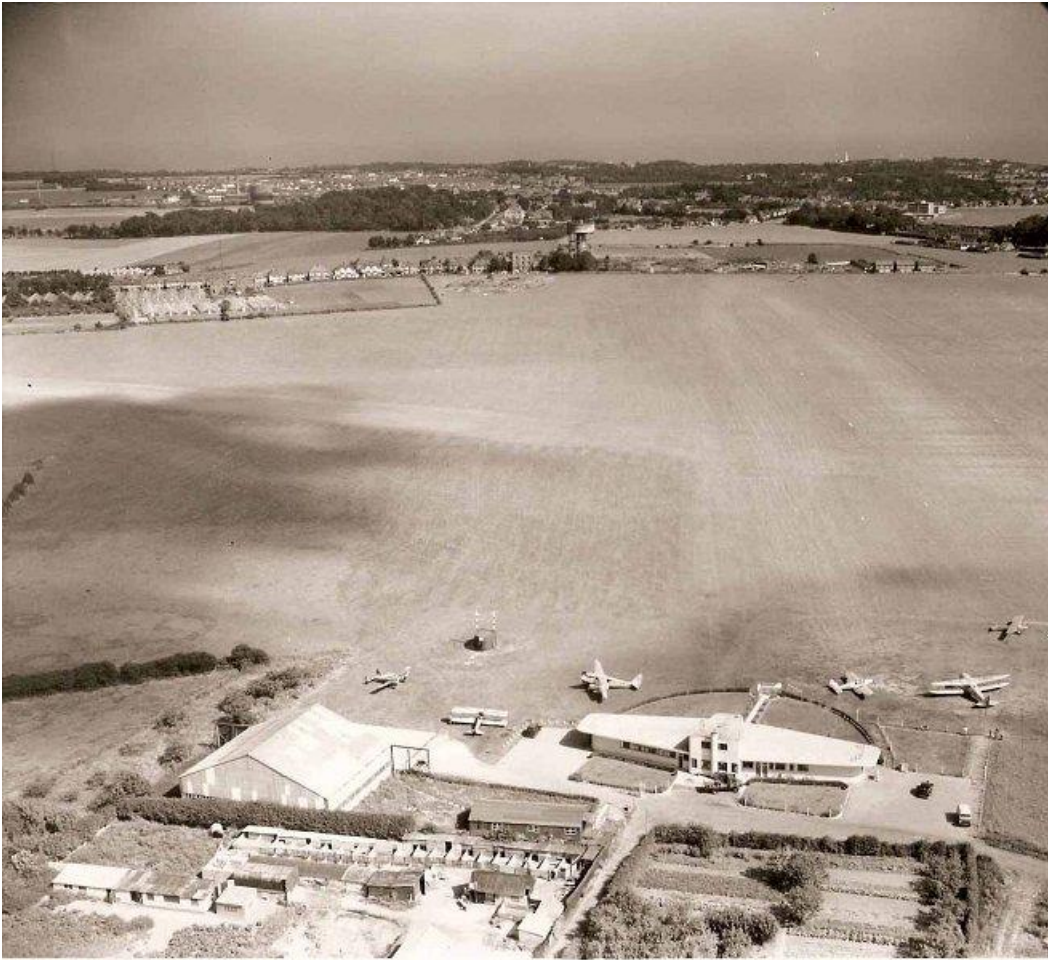
In fact the biggest employer in the area was the Pfizer site located between Ramsgate and Sandwich closed in 2012 with the loss of 2400 jobs had a massive effect on the job market in East Kent. It has reopened and now employs 3500 people many on better wages than they would have received at a Manston Cargo Hub. Discovery Park on the old Pfizer site has a major advantage over Pfizer as it isn't just one employer and the synergy will mean if one firm is in trouble it will not mean mass unemployment.

There is history in Thanet for closed airfields because at one time Ramsgate had two. Manston and Ramsgate municipal.

Ramsgate Municipal opened in the 1930's and was used in WW2 as support for Manston however reopening after the war it only lasted to 1968 when it closed with the loss of 29 jobs. All businesses at the airfield moved to Manston and the land use was re-allocated to an industrial estate now employing over 500 people and more than 100 companies. Part of the land was allocated to housing and became a housing estate built by Wimpey.

Images below showing post war and post closure

Unemployment in Kent



Ramsgate Airfield showing the iconic control tower now demolished



Pyson's Industrial Estate